

DESCRIPTION

Solenoid valve 2 way normally closed
direct acting poppet type.

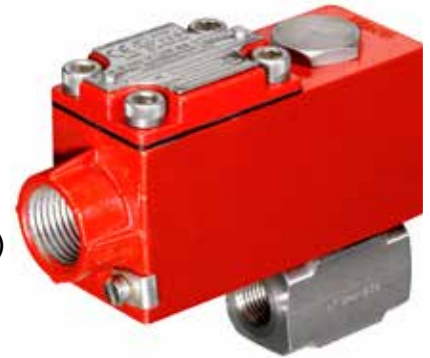
With explosion proof coil certified for hazardous area:

ATEX II 2GDEx d IIC T6 o T5 o T4 Gb

Ex tb IIIc T80°C o T95°C o T130°C Db IP66

Tamb -40°C ÷ +35°C(T6) o +50°C(T5) o +60°C(T4)

(other certifications e.g.. EAC, INMETRO, CCOE etc. on request)



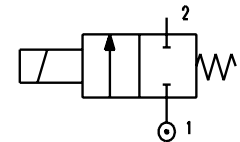
2

VALVE CONSTRUCTION

Body **AISI 303**
Seal material **FPM**

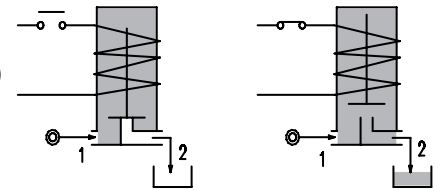
EXPLOSION PROOF COIL CONSTRUCTION

Housing **Red colour alloy (painted with epoxy powder)**
Electrical connection **1/2" NPT (M20x1 on request)**



FEATURES

Maximum allowable pressure **PS 80bar**
Maximum fluid viscosity **25cSt (mm²/s)**
Ambient temperature: **-10°C ÷ +35°C(T6), +50°C(T5), +60°C(T4)**
Mounting position with vertical coil above



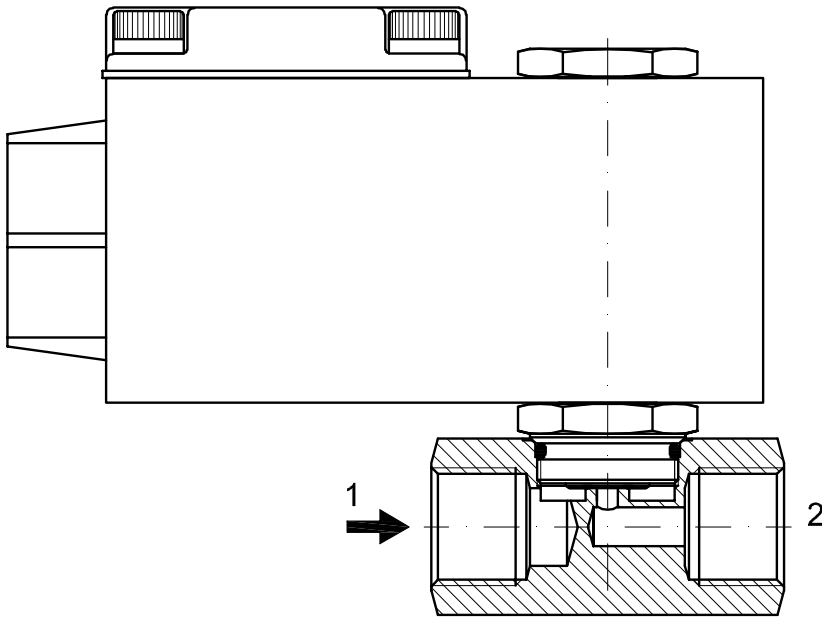
NOTE: The solenoid valve is suitable only with media that are **NOT** potentially explosive

| CODE | Connection G | Orifice mm | Kv m ³ /h | Differential pressure bar | | | Nominal power | | Coil Series | Seal | Temp. range °C |
|------------------------------------|-----------------|---------------|-------------------------|------------------------------|------------|------------|---------------|-----------|----------------|--------------|----------------------|
| | | | | Min | Max | | AC | DC | | | |
| | | | | | AC | DC | | | | | |
| ^② A110BV20///... | 1/4" | 2 | 0.1 | 0 | 22 | 20 | 12 VA | 8W | A6 | FPM=V | -10 +80 |
| A110BV25///... | | 2.5 | 0.15 | 0 | 16 | 14 | | | | | |
| A110BV35///... | | 3.5 | 0.32 | 0 | 10 | 8 | | | | | |
| A110BV45///... | | 4.5 | 0.41 | 0 | 6.5 | 3.5 | | | | | |
| A110BV52///... | | 5.2 | 0.47 | 0 | 4 | 1.8 | | | | | |
| A110BV64///... | | 6.4 | 0.64 | 0 | 3.5 | 1 | | | | | |
| ^② A110CV20///... | 3/8" | 2 | 0.1 | 0 | 22 | 20 | 12 VA | 8W | A6 | FPM=V | -10 +80 |
| A110CV35///... | | 3.5 | 0.32 | 0 | 10 | 8 | | | | | |
| A110CV52///... | | 5.2 | 0.47 | 0 | 4 | 1.8 | | | | | |
| A110CV64///... | | 6.4 | 0.64 | 0 | 3.5 | 1 | | | | | |
| ^② A110DV20///... | 1/2" | 2 | 0.1 | 0 | 22 | 20 | 12 VA | 8W | A6 | FPM=V | -10 +80 |
| A110DV35///... | | 3.5 | 0.32 | 0 | 10 | 8 | | | | | |
| A110DV52///... | | 5.2 | 0.47 | 0 | 4 | 1.8 | | | | | |
| A110DV64///... | | 6.4 | 0.64 | 0 | 3.5 | 1 | | | | | |

^② Coil

| COILS | Alternating Current 50/60Hz (V) | | | | Direct Current (V) | | | Electrical connection |
|---------------------|---------------------------------|-----|-----|------------|--------------------|-----|-----|-----------------------|
| | 24 | 48 | 110 | 220 230 | 12 | 24 | 48 | |
| Series A6 Code ② | A6B | A6C | A6D | A6E | A60 | A61 | A62 | 1/2" NPT |

DESCRIPTION
 Voltage tolerance
 AC +15% -10%
 DC ± 10%
 Protection class IP66
 Continuous service ED100%



OVERALL DIMENSION

